

LANDSCAPE

Skidmore's campus, with natural and man-made features, is a model of rational 1960's campus design and the pride of the college community.

The natural landscape, forty years old, is now mature. It is of great diversity, from the open greens space of South Park, to the glades of North Woods, to the specimen trees of Case Green. In 1988, Landscape Architect Susan Child produced a Landscape Site Plan for the preservation, maintenance and development of the campus landscape. Much of what she proposed almost twenty years ago has been accomplished.

We believe that in the next twenty years, as the college develops Crescent, Scribner and Palamountain Greens, it should take another overall look at its landscape. For instance, except for its general shape, the design of Crescent Green is an open book. Should it be developed as a vegetated transition between Case Green and the North Woods? Or should it be manicured and have a canopy of trees as in Case Green? What species? There may be rock outcroppings; What to do with them? Similar questions can be asked of Scribner Green.

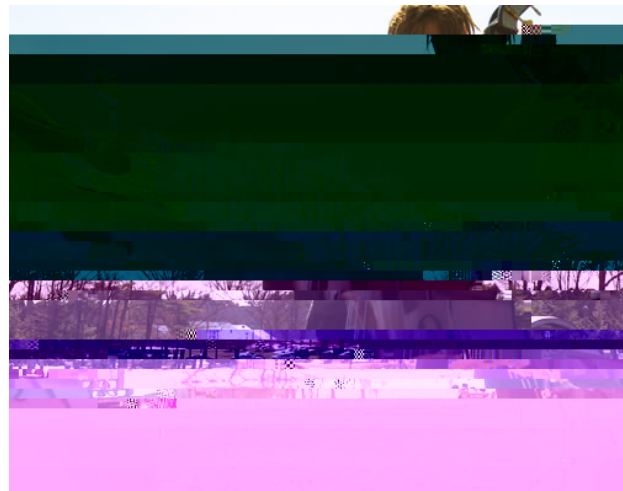
The man-made landscape has also changed since 1962. In other sections of this report, we comment on the roadways and paths. Lighting and signage were significantly improved following the 1989 Campus Site Plan.

The Jonsson Campus is an ideal setting for public art. We endorse Josephine Case's call for "art of all kinds."

We regret that Skidmore's early history in downtown Saratoga Springs is gone from sight, and we propose the installation of the Temple Grove Seminary Bell, perhaps in a bell tower at Case Green, to help tie this modern campus back to its roots.

The college has handled parking with great care, softening its impact with planting. As the number of spaces increases and existing lots are lost to new buildings, the college will be pressed, understandably, to maximize close-in parking. There will be tough decisions ahead, and a well considered landscape plan can help make those decisions.

Skidmore is now blessed with a landscape shaped by those with long-term views. We need to do likewise for the campus of the future.



"Cellist by Haupt Pond"

Photo: Meave Hamill '07



"Girl on the Green, Fall"

Photo: Heather Gilchrist '09



"Geologic Balance"

Photo: Elizabeth DeBold '09